

# THE PILCHUCKER

November 2015  
NEWSLETTER FOR PILCHUCK CAMERA CLUB EVERETT WASHINGTON

All images printed in the newsletter are the property of the photographer.



© Mary Tevis

## **In this issue:**

- Pg. 2 Coming Events**
- Pg. 3 Meeting Minutes**
- Pg. 4 Cover Image**
- Pt. 4 Monthly Challenge Winner**
- Pg. 4 October Winning Images**
- Pg. 5 October Winning Images cont.**
- Pg. 6 Annual Competition Information**
- Pg. 7 October Image Scores**
- Pg. 8 Kudos Page**
- Pg. 9 Deering Wildflower Acres Park**
- Pg. 10 The Colors of Fall**
- Pg. 20 Member Listing**

If you have something you would like to share in the newsletter, suggestions of things you would like to see, or just general comments, please forward to [sonyalang@hotmail.com](mailto:sonyalang@hotmail.com)

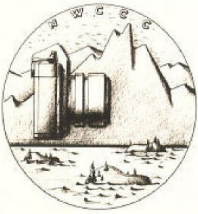


# The Pilchuck Camera Club Newsletter

Serving members from the Puget Sound Area of Washington State

The Pilchuck Camera Club was organized June 12, 1964 and is a member of the Photographic Society of America (PSA) and the Northwest Council of Camera Clubs (NWCCC). Membership is open to anyone interested in color or monochromatic digital photography. Club meetings are held at 7:00 p.m. on the second Thursday of each month in the Baker Heights Social Hall, 1401 Poplar Street, Everett, WA.

**Pilchuck Camera Club Web Page:** <http://www.pilchuckcameraclub.com>  
**Photographic Society of America (PSA) Web Page:** <http://www.psa-photo.org>  
**Northwest Council of Camera Clubs (NWCCC)** <http://www.nwcameraclubs.org>



## 2015 Officers

**President - Sonya Lang**  
Phone 425-773-9680  
[sonyalang@hotmail.com](mailto:sonyalang@hotmail.com)

**Vice President - Greg Thomas**  
Phone: 425-334-2861  
[thomasigolf@comcast.net](mailto:thomasigolf@comcast.net)

**Secretary - Tim Garton**  
Phone: 206-714-1668  
[thgarton@gmail.com](mailto:thgarton@gmail.com)

**Treasurer - Stephen Lightle**  
Phone: 425-330-8623  
[lightle@comcast.net](mailto:lightle@comcast.net)

## Standing Committee Chairpersons

**Membership:** Jerry Sorensen  
Phone: 425-238-4595

**Social - Renata Kleinert and Carol Delaune**  
Phone: 425-773-9840 [photosbyrenata@frontier.com](mailto:photosbyrenata@frontier.com)

**Sunshine:** Janet Wright  
Phone: 360-387-7456 [photo@wavecable.com](mailto:photo@wavecable.com)

**Club Competition :** Jim Basinger  
Phone: 360-658-8938 [jbasingerokie@comcast.net](mailto:jbasingerokie@comcast.net)

**PSA Club Representative:** Kevin Siefke  
Phone: 425-328-9401 [ksiefke@comcast.net](mailto:ksiefke@comcast.net)

**NWCCC Delegate:** Renata Kleinert  
Phone: 425-773-9840 [photosbyrenata@frontier.com](mailto:photosbyrenata@frontier.com)

**Field Trips:** Stephen Lightle  
Phone 425-330-8623 [lightle@comcast.net](mailto:lightle@comcast.net)

**Point Records:** Jim Basinger  
Phone: 360-658-8938 [jbasingerokie@comcast.net](mailto:jbasingerokie@comcast.net)

**Historian:** Janet Wright  
Phone: 360-387-7456 [photo@wavecable.com](mailto:photo@wavecable.com)

**Pilchucker Editor:** Sonya Lang  
Phone: 425 773 9680 [sonyalang@hotmail.com](mailto:sonyalang@hotmail.com)

## COMING EVENTS

### Monthly Club Meeting:

7 pm at the Baker Heights Social Hall  
1401 Poplar Everett Washington

**November 12, 2015**

**3 Regular Competition Images**

**3 Challenge Images —**

To: [jbasingerokie@comcast.net](mailto:jbasingerokie@comcast.net)

**SEND ALL IMAGES**

**No later than**

**November 10, 2015**

Dimension requirements for submitted images:  
No larger than 1920 pixels wide or 1080 pixels tall.

### Program:

## Commentary by Judges



**November Refreshments**  
**Steve Lightle**

## SEPTEMBER 2015 MEETING MINUTES



Date 9/10/2015

The September meeting of the Pilchuck Camera Club is called to order by President Sonya Lang at 7:05 p.m. There are 17 members present and no guests.

The minutes of the August meeting are approved as printed in the Pilchucker.

Correspondence received: None.

Treasurer Steve Lightle reports \$478.30 in the treasury. Last month's balance was \$500.43. From that amount, \$22.13 was spend in Staples on a laser pointer, resulting in our current balance.

Vice President Greg Thomas presented certificates to the winners of prior competitions who were in attendance.

The program for this month's meeting is a presentation by Greg Thomas on the use of the OnOne image processing software "Photosuite 9.5".

### Committee Reports:

Membership: No change.

Social: The following people have volunteered to bring refreshments for the noted months: October – Tim Garton, November – Steve Lightle. The Christmas Party in December will be a pot luck.

Sunshine: None.

PSA Representative: The September PSA Journal is available to members.

NWCCC: There will be a fall conference November 14<sup>th</sup> in North Seattle.

Field Trips: Fields trips are planned to the following venues: A winter field trip to Oregon is in the planning phase.

### Image Competition:

Image registration and projection by Steve Lightle

Number of images: 48 Regular Competition, 28 Monthly Challenge (topic – Sunrise/Sunset).

Judges: Mary Tevis, Tim Garton, Greg Thomas

Tabulation Jim Basinger

Announcements:

Old business: None.

New business: Pilchuck Camera Club will be sponsoring a presentation by Randall Hodges that will happen on October 22nd 7-9 in the Baker Heights Social Hall. This is not a PCC meeting but is an additional educational event sponsored by PCC. The club voted in the meeting to allocate \$100 from our treasury to pay for the event.



## Cover Image

### Hugs

By Mary Tevis



This image was taken in September 2015 at Samburu, which is a small village near Samburu National Park. The tribe are also called the Samburu, but they are an offshoot of the Maasai. The light was very harsh, but in spite of that, my Nikon D7100 handled it very well. It was shot at f/8, aperture priority, 1/1250, EV minus 1, with my Nikkor 28-300mm lens. The little boy was Mr. Personality. He welcomed us with a huge smile and held our hands and danced with the women. He was exceptionally bright as the other children were more reserved. We en-

---

## October Challenge Night Photography

### Aurora

By Sharon Ely

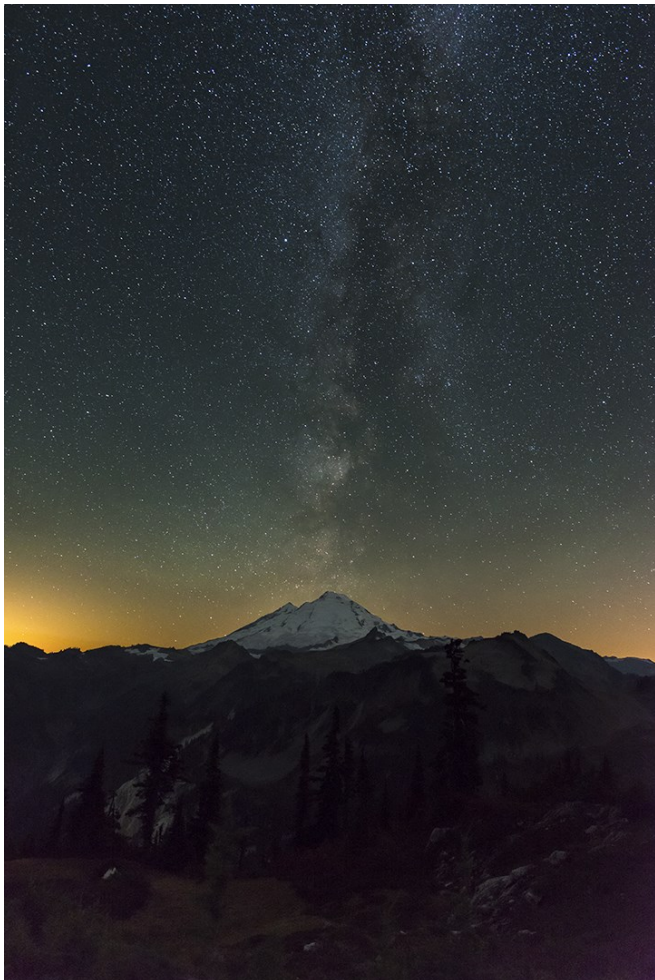




# OCTOBER COMPETITION WINNERS



**First Place  
GLACIER LAGOON  
Sharon Ely**



**First Place  
MILKY WAY OVER MT BAKER  
Kevin Siefke**



**First Place  
GRANERY  
Sharon Ely**

## OCTOBER COMPETITION WINNERS cont.



Honorable Mention  
Ane  
Sonya Lang



Honorable Mention  
Seagull  
Jim Basinger

### Annual Competitions

**Only two months left to take this years competition images.**

Pilchuck Camera Club annual competitions are as follows:

**Image of the Year**—must be an image that was submitted between January 2015 and December 2015. You may submit up to 3 images.

**Assigned Subject is “Rays of Light”:** You may submit up to 3 images and those images must have been taken between January 2015 and December 2015.

**Wildflower**—Must be a wildflower, and you may submit up to 3 images taken between January 2015 and December 2015.

The deadline to submit images for these competitions will be announced at the December club meeting.

*If you would like more information on how to participate in these competitions*



PILCHUCK CAMERA CLUB OCTOBER 2015 SCORESHEET

Nbr	Title	Maker	Score	Honor
1	2 EAGLES	JIM BASINGER	19	
2	CHENA HOT SPRINGS	TRACY CARSON	20	
3	ANE	SONYA LANG	22	HM
4	BLUE ANGELS	BILL SCHWARZ	19	
5	B&W DALIAS	GREG THOMAS	21	
6	BLUE SKIES AT MAPLE PASS	TIM GARTON	17	
7	CATHOLIC CHURCH	GINA BARRAGAN	19	
8	CLOSE TO SUNSET	NORM KREGER	15	
9	EBB AND FLOW	SHARON ELY	21	
10	EL NIRO	STEVE LIGHTLE	20	
11	FLAMINGO ON NEST	JANET WRIGHT	15	
12	GREEN LIGHT	JIM RAHM	18	
13	GREY CROWNED CRANE	MARY TEVIS	18	
14	IT PAYS TO LOOK BEHIND YOU	SHERRIE TALLMAN	17	
15	MILKY WAY OVER MT BAKER	KEVIN SIEFKE	24	1ST
16	SEAGULL	JIM BASINGER	22	HM
17	BOWMAN DOCK	TRACY CARSON	20	
18	GODS HOUSE	SONYA LANG	21	
19	LAKE MORRAINE CANOES	BILL SCHWARZ	21	
20	WAITING OUT THE STORM	GREG THOMAS	18	
21	LARCHES AT HEAHER PASS	TIM GARTON	17	
22	ESPLANADE 2	GINA BARRAGAN	17	
23	FIRE RAINBOW	NORM KREGER	17	
24	GLACIER LAGOON	SHARON ELY	24	1ST
25	GREEN AND BLUE	STEVE LIGHTLE	20	
26	GIRL AND CALF	JANET WRIGHT	19	
27	HUGS	MARY TEVIS	20	
28	MOUNTAIN SHEEP AT GLACIER	SHERRIE TALLMAN	21	
29	STARLING	JIM BASINGER	19	
30	FALL COLOR	TRACY CARSON	17	
31	BOWMAN DOCK	SONYA LANG	21	
32	VALLEY OF THE GODS	BILL SCHWARZ	21	
33	MISTY SUNRISE	GREG THOMAS	17	
34	EARLY FROST	TIM GARTON	17	
35	MONASTERY PATIO	GINA BARRAGAN	16	
36	PURPLE THISTLE	NORM KREGER	16	
37	GRANERY	SHARON ELY	24	1ST
38	THE ZIPPER	STEVE LIGHTLE	21	
39	TOOL SHED	JANET WRIGHT	18	
40	LAVENDER BREASTED ROLLER	MARY TEVIS	18	
41	SAGUARO SUNRISE	SHERRIE TALLMAN	20	
42	AURORA AND BIG DIPPER REFLECTION	SHANE ELEN	21	

The Snohomish County Assessor's main web page was recently updated and includes a short slide show of images taken in Snohomish County and features images by **Kevin Siefke!**

<http://www.snohomishcountywa.gov/2934/Assessor>



Sonya Lang received a Fair Medal for Originality award from the Puyallup fair in the large monochrome division for the image “Beauty Wolf”.

Check out the 2015 Northwest International Exhibition of Photography, Catalog/Results here

<http://www.thefair.com/participate/exhibit-entries/>





# Deering Wildflower Acres Park

## Deering Wildflower Acres Park

### Where The Mushrooms Grow

By Steve Lightle

Located in the south east corner of Marysville is the quiet natural area; Deering Wildflower Acres. The trails are wide and well signed; the paths level making for a pleasant walk. Dogs, horses and bicycles are not permitted creating a quiet environment. The day Jim, Tim and I visited we didn't encounter another soul.

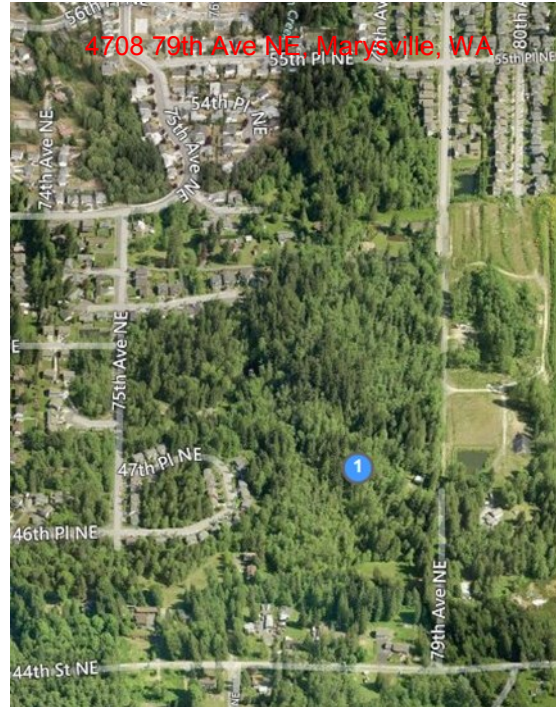


Image By Jim



Image By Tim



Image By Steve

Finishing off the day with coffee at Venaccio's in Marysville – loved the dark chocolate mocha.

# The Colors of Fall

I'm going to begin with the backstory on how I came to find myself writing this article about the colors of fall. A couple weeks ago, Sonya and I discussed a drive over Hwy 2 on Sunday if the weather was going to cooperate. As the weekend got closer the forecast was for clouds and a few showers. Not too bad – right? OK, so we will leave at 9AM Sunday morning and see what we can find. Steve then decided he wanted to go with us, which is great - the more the merrier, but he wants to leave at 7AM. . . . For those of you who don't know, I am so not a morning person. I agree to get up before daylight, go pick up Sonya, then we go pick up Steve and we are on the road for our adventure pretty close to on time, barely daylight. We had definite cloud cover, no good sunrise was going to happen, so we proceed up and over the pass. Weather is still OK, and we are seeing some promising color. We make a couple stops for photo ops and continue on down into the Tumwater Canyon. We of course had to stop at the Fudge Factory and by this time the rain is coming down pretty hard. Steve and I both had to go in for fudge and taffy and I tried unsuccessfully to get a good shot of the raindrops dripping off a maple tree behind the shop. So we continued on down to the old railroad bridge where there is a lot more color than there was a couple of weeks before. Even though it's really wet by now, it didn't stop us from shooting of course.

After that we decided to go into Leavenworth for lunch and to see what the weather was going to do. While we were having lunch, the rain seemed to let up a bit and the sky looked a little lighter, just enough to tease us into thinking it might quit. No such luck. After lunch we headed up the Chumstick Hwy towards Plain and Lake Wenatchee. We stopped at Lake Wenatchee for a while and it was still raining pretty hard, but again we're photographers and a little rain wasn't going to stop us, so shoot we did. It was time to get out the raingear for the cameras though. Thanks to Steve for having an extra one since I was going by the weather report of cloudy with showers, not a downpour and I was not prepared. It was getting to be mid-afternoon and I have my dog locked up in her kennel and I am thinking it's time to head for home. So we load back into the car once more and made one final stop at the 59-er Diner for yes, you guessed it – ice cream. Any trip with Steve isn't complete without ice cream!

Somewhere along the way Steve asked me if I would be interested in writing an article about our adventure. I agreed, but started thinking. How much can I really say about our road trip in the rain? The company was good, in spite of the rain we of course took some photos, the color was beautiful and we had ice cream. All in all a fun day, but an article out of that? Hmmm. So I decided that I wanted to not only tell my story, but I wanted to hear and include yours as well. We all have our adventures be them near or far and I have received some great photos to include. And the colors are outstanding! The fall color palette is perhaps my favorite.

I'll start sharing images with one of mine, this one is of a stop we made somewhere on Hwy 2, east of the pass. I like how the colors go from yellow, to orange and then to red.





# The Colors of Fall

The next couple are from Steve and are from the day Steve, Sonya and I drove over Hwy 2. Here's what Steve wrote -

Tumwater Canyon on a cool overcast threatening rain day. I particularly like the curve of the river which was calm enough in this stretch of the river to provide a nice reflection of the yellow trees.

The left side of the image was cropped to remove leaves made blurry by the bit of wind.

Canon 40D, 24-105 Zoom at 24mm, Circular Polarizer, Exposure ISO 100, 1.6 Sec @ F 14



This was the last stop before lunch. We (Tracy, Sonya and I) briefly debated whether to stop or not as it was raining lightly. I'm glad we did as I like photographing rusty artifacts. I think the rusty red of the bridges goes nicely with the yellows and greens of the trees. The original image was a bit too blue for my taste showing up strongest in the rocks. Achieving what I believe to be a more natural color in the rocks resulted in less blue/green in the water.

Canon 40D, 24-105 Zoom at 35mm, Circular Polarizer, Exposure ISO 100, 1.0 Sec @ F 16



Great images Steve! Thank you for sharing.

# The Colors of Fall

Greg and his wife were out and about over to Leavenworth as well as other locations. Greg says –

## A Fisherman's Dream.....

My wife and I took a trip over to Leavenworth to take fall color pictures in the middle of October, and just before driving into Tumwater Canyon there is a small stream that runs somewhat parallel to the highway called Nason Creek. In my younger life I was an avid fly fisherman and this scene brought back many memories of walking and fishing small streams for trout on a beautiful fall day with all the great fall colors. Of course I had to stop. I got my camera down just above the water level to try and recreate what I would see standing in the river up to my waste in water. I took probably 10 frames and this is the one I liked the best.



## Enjoying a Fall Afternoon.....

Near the end of October I was going to my son's house for dinner and had promised my grandson I would pick him up from the school bus stop near his house (about 3 block away). While I was waiting I was taking photos of the great fall colored trees. In an effort to try and fill the frame with just trees and colorful leaves, I stepped around the tree trunk and this scene took place. When I took it I was not sure if the person, (he was waiting for his son and daughter on the same bus and reading a book), would look right or just be a distraction which I would have to remove. Happily when I got home and put it on the screen I really like it. I feel the person sets the mood for the title of the photo.



More beautiful fall colors and great images. And the story behind the images are exactly why I wanted to include everyone ; - ). Thanks for sharing Greg!



# The Colors of Fall

Bob has found fall color from his own backyard to Wenatchee. Here's what Bob has to say –

**Red and Green** is an in camera multiple exposure made in the yard at home.



**Yellow 3** was shot along US 2 on the east side of Stevens Pass during a trip to Wenatchee for MIAP business.



Awesome colors and composition. Thanks for sharing Bob!

# The Colors of Fall

Sonya has been busy shooting out and about all over as usual and has this to say about the images she is sharing –

You all know I love the zoo -spring, summer, winter and fall! I managed to find plenty of fall color in the foliage, animals and people, who wore their fall colors this month at Woodland Park Zoo. The weather here in the PNW is very unpredictable but I found that the rain added an additional element to the images that I wouldn't have otherwise captured.



Great images Sonya! Always love your creativity. Thank you for sharing!



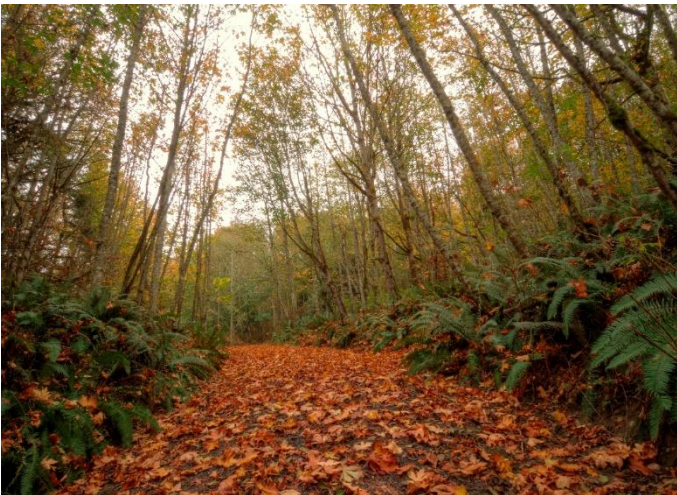
# The Colors of Fall

Tim has also been out and about and has shared his images below –

Pilchuck River Fall - Crossing the Pilchuck River on the OK Mill Road Bridge, the sun on the yellow leaves of the trees bordering the river caught my eye. I parked and came down to the bank by the bridge for the shot. This was hand held at F22, ISO200 with a 1/8 second exposure.



The Road Not Traveled - This is over by Port Townsend. I noticed a private road going up into the woods with a fence across the entrance. This kept the leaves on the road from being disturbed and I liked how the road rolled off to the left and disappeared. I parked at the fence and set my tripod up to shoot over it. Shot at F22, ISO 100 and 1.3 seconds exposure (trying the Randall Hodges technique).



Both great images, but I love the road less traveled Tim. I can imagine walking down that road with the leaves crunching under my feet. . . . Thanks for sharing!

# The Colors of Fall

Renata has been out shooting as well and has some more amazing fall images. She says –

**I Love the delicate form of the leaves and branches that, I can look through and think of how beautiful autumn is**



**The bright leaves celebrate the colors and sometimes one leaf has to be different.**



Love the colors of the leaves! More awesome images. Thanks for sharing Renata!

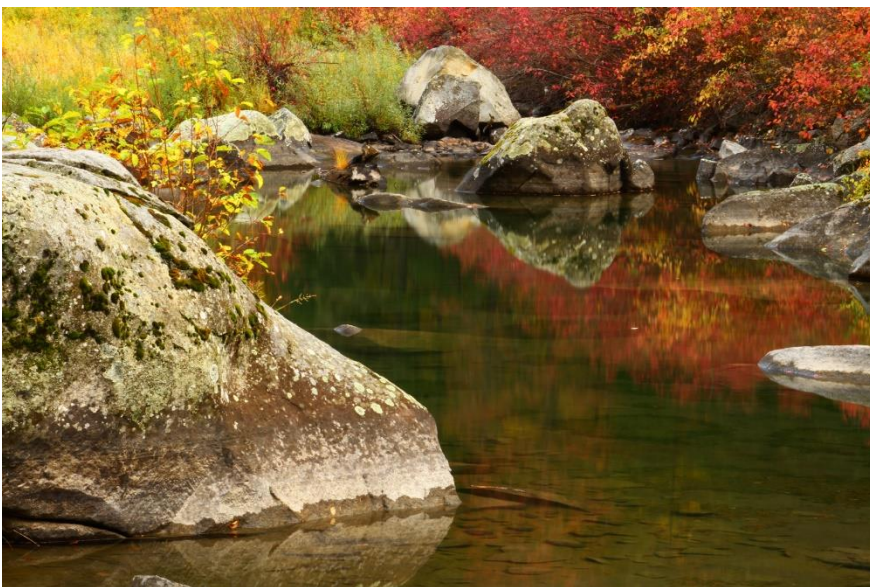


# The Colors of Fall

Last, but not least Sherrie sent me some images while she was awake in the middle of the night. I think she's a good one to go take night shots with me – hint, hint Sherrie.... Here's Sherrie's images and what she had to say –

Both of these photos were shot in Tumwater Canyon on Oct. 19 and 20, during the peak of fall color. I was finally able to attend a fall color workshop with Randall Hodges. I was one of his seven students at a two day workshop at Lake Wenatchee (sunrise and sunset/night) and Tumwater Canyon. I was amazed at the variety of color, as I had never been to Tumwater Canyon during "the peak." Let me tell you, when you take one of Randall's workshops you learn to really hustle – we learned to put away and set up our gear quickly as we raced from location to location.

On a side note, not only did I find incredible color in the beautiful terrain and the reflective water of the river, but also at Prey's Fruit Market, which is located East of Leavenworth. They let me spend as much time as I wanted photographing their colorful fall displays and bins of fruit, gourds, squash and pumpkins. I ventured up Icicle Canyon late in the afternoon on my last day and stayed until it was nearly dark. There were so many places in that vicinity that I wanted to go to. I could have stayed in the Leavenworth area all week! Maybe next year...



# The Colors of Fall

I've definitely seen a theme in some of the images, it seems Hwy 2 and the Leavenworth area is a very popular place. It is definitely beautiful this time of year. Great images, thanks for sharing Sherrie!

The beauty of fall will never cease to amaze me, and I didn't think we were going to get much color this year since it was so hot and dry all summer. All of these images have definitely proved me wrong! Thank you to everyone who sent me your images and your stories.

This next image is of Sonya and Steve at the 59-er Diner, and it's not my best image. I was playing with HDR in there and shot it in HDR without a tripod. So Steve and Sonya – sorry!



As the color is fading and the leaves are rapidly falling off the trees, I find myself feeling a little melancholy; however, Sonya has re-introduced me to the zoo and I find the winter months to be a much more enjoyable time to shoot there. The crowds are much less than during peak season and it gives me a chance to practice shooting animals or as I like to call them – moving targets. I personally have a lot of room to improve on animal and wildlife photography! Oh, and there are also night cityscapes to be taken in the rain. I was introduced to reflections of the city at night and I've been waiting since March for rain on a weekend night when I don't have to get up early the next day. I'm looking forward to experimenting with reflections from the rain. Just need a friend or two willing to go to Seattle, at night and in the rain. Any takers?

As I finish writing this, I have one more story and I want to say how thankful I am to live in such a beautiful state where we have so many awesome places for photography, no matter what time of year. I am also thankful to belong to a photography club with such great people who I have felt welcomed by from day one. And lastly, I am thankful for a renewed belief in a power higher than myself, that was given to me by a man who didn't even give us a chance to ask his name that Sonya and I spoke with on our first trip over to Leavenworth. We drove the same path a couple of weeks earlier and as we rounded a corner on the Chumstick Hwy, Sonya spotted a small chapel. We had passed it and decided to turn around for a better look. We pulled off the road and onto private property. The chapel was down in a little valley. We got out of the car, trying to decide what we wanted to do. Do we ask someone if we can shoot it? Do we shoot from where we are and then leave? About the same time, we see a man on a 4-wheeler flying up the dirt drive towards us, and we are thinking we are going to get kicked off the property. He came up, stopped and asked us if we were taking pictures. We said we would like to because the chapel and the fall color were so awesome. Rather than kick us off his property he told us this story -In 1994, Leavenworth and the surrounding areas were hit with multiple fires, including the Tyee Fire which started in the Entiat Valley and was burning towards Chelan but then changed direction and began threatening the Chumstick Valley. The Hatchery Creek Fire which started in the Tumwater Canyon, jumped the Wenatchee River and Hwy 2, burned up and over the mountain and came down towards the Chumstick Valley from the



# The Colors of Fall

other side and the Rat Creek Fire which started in the Icicle Creek Canyon. The man told us they were basically surrounded by fire and under evacuation orders. He chose to stay behind to try and protect his property. He told his neighbor that if his home and property survived the fire that he would build God's House. His home and his property did survive the fires which continued to burn until snow fell that year. So rather than boot us off his property, he told us we were actually in his neighbor's driveway, he showed us his and invited us to photograph his property, then he rode off and never came out again. We had hoped he would so we could talk with him some more. I researched the fires and learned that over 180,000 acres burned in Washington that year alone and you can still see the scars from the fires in the Tumwater Canyon to this day. This is an image of God's House, born out of a promise by a man protecting his home.



With that, I will say be thankful daily and happy shooting!

# PILCHUCK CAMERA CLUB MEMBERS

Name	Surname	E mail	Phone
Bill	Dewey	<a href="mailto:retief@deweydrive.com">retief@deweydrive.com</a>	425-879-9250
Bill	Schwarz	<a href="mailto:Bill@bjschwarz.com">Bill@bjschwarz.com</a>	425-422-6367
Chris	Lingenfelter	<a href="mailto:christine_cunningham@juno.com">christine_cunningham@juno.com</a>	425-239-3499
Deborah	Rust	<a href="mailto:snap_deb@yahoo.com">snap_deb@yahoo.com</a>	805-443-3928
Doug	Goodman	<a href="mailto:goodman.douglas@gmail.com">goodman.douglas@gmail.com</a>	425-954-0197
Gary	Lingenfelter	<a href="mailto:glingen@yahoo.com">glingen@yahoo.com</a>	425-239-3499
Georgina	Barragan	<a href="mailto:ginafredd@hotmail.com">ginafredd@hotmail.com</a>	425-737-0116
Greg	Thomas	<a href="mailto:thomasigolf@comcast.net">thomasigolf@comcast.net</a>	425-334-2861
Harvey	Wade	<a href="mailto:clevelandh36@hotmail.com">clevelandh36@hotmail.com</a>	213-219-4900
Janet	Rapelje	<a href="mailto:jrapleje78@gmail.com">jrapleje78@gmail.com</a>	360-652-6623
Janet	Wright	<a href="mailto:photo@wavecable.com">photo@wavecable.com</a>	360-387-7456
Jerry	Sorensen	<a href="mailto:sorensenjerry@yahoo.com">sorensenjerry@yahoo.com</a>	425-238-4595
Jim	Basinger	<a href="mailto:jbasingerokie@comcast.net">jbasingerokie@comcast.net</a>	360-658-8938
Jim	Rahm	<a href="mailto:Jim@rahm.org">Jim@rahm.org</a>	360-568-3590
John L	Laggart	<a href="mailto:jmnlaggart@msn.com">jmnlaggart@msn.com</a>	360-421-3527
Kevin	Siefke	<a href="mailto:ksiefke@comcast.net">ksiefke@comcast.net</a>	425-328-9401
Linda	Davis	<a href="mailto:LDavis7734@comcast.net">LDavis7734@comcast.net</a>	360-658-8938
Lloyd	Johnson	<a href="mailto:lj5641@yahoo.com">lj5641@yahoo.com</a>	425-412-3783
Magaret	McLeod	<a href="mailto:ablemcleod@comcast.net">ablemcleod@comcast.net</a>	425-359-2536
Mary	Tevis	<a href="mailto:marytevis@comcast.net">marytevis@comcast.net</a>	206-533-8301
Mike	Guderjohn	<a href="mailto:elrique64@gmail.com">elrique64@gmail.com</a>	701-770-6983
Norm	Kreger	<a href="mailto:photo@wavecable.com">photo@wavecable.com</a>	360-387-7456
Paula	Bailly	<a href="mailto:paula.bailly@sno.wednet.edu">paula.bailly@sno.wednet.edu</a>	360-668-5031
Renata	Kleinert	<a href="mailto:photosbyrenata@frontier.com">photosbyrenata@frontier.com</a>	425-355-7758
Robert	Patrick	<a href="mailto:pgrider63@comcast.net">pgrider63@comcast.net</a>	206-450-0620
Shane	Elen	<a href="mailto:3142se1@gmail.com">3142se1@gmail.com</a>	
Sharon	Ely	<a href="mailto:sharely@msn.com">sharely@msn.com</a>	253-952-8321
Sherrie	Tallman	<a href="mailto:SherrieTallman@comcast.net">SherrieTallman@comcast.net</a>	425-232-2162
Sonya	Lang	<a href="mailto:sonyalang@hotmail.com">sonyalang@hotmail.com</a>	425-773-9680
Sonia	Rahm	<a href="mailto:Sonia@rahm.org">Sonia@rahm.org</a>	360-568-3590
Steve	Lightle	<a href="mailto:lightle@comcast.net">lightle@comcast.net</a>	425-330-8623
Tim	Garton	<a href="mailto:thgarton@gmail.com">thgarton@gmail.com</a>	206-714-1668
Tom	Detchemendy	<a href="mailto:TomDetch@outdrs.net">TomDetch@outdrs.net</a>	360-403-9089
Tracy	Carson	<a href="mailto:t.carson1@yahoo.com">t.carson1@yahoo.com</a>	425-343-3164