

THE PILCHUCKER November 2014

NEWSLETTER FOR PILCHUCK CAMERA CLUB EVERETT WASHINGTON

All images printed in the newsletter are the property of the photographer.



©Sonya Lang

In this issue:

[Pg. 2 Coming Events](#)

[Pg. 3 Meeting Minutes](#)

[Pg. 4 & 5 Darren White on ETTR](#)

[Pg. 6 Cover Image](#)

[Pg. 6 Challenge Winner](#)

[Pg. 7 Monthly Winning Images](#)

In this issue:

[Pg. 8 Monthly Images Score Sheet](#)

[Pg. 9 Mushroom Photographers Paradise](#)

[Pg. 10 Mushroom Photographers Paradise cont.](#)

[Pg. 11 Annual Competition Information](#)

[Pg. 12 Member List](#)

If you have something you would like to share in the newsletter, suggestions of things you would like to see, or just general comments, please forward to sonyalang@hotmail.com



The Pilchuck Camera Club Newsletter

Serving members from the Puget Sound Area of Washington State

The Pilchuck Camera Club was organized June 12, 1964 and is a member of the Photographic Society of America (PSA) and the Northwest Council of Camera Clubs (NWCCC). Membership is open to anyone interested in color or monochromatic digital photography. Club meetings are held at 7:00 p.m. on the second Thursday of each month in the Baker Heights Social Hall, 1401 Poplar Street, Everett, WA.

Pilchuck Camera Club Web Page: <http://www.pilchuckcameraclub.com>
Photographic Society of America (PSA) Web Page: <http://www.psa-photo.org>
Northwest Council of Camera Clubs (NWCCC) <http://www.nwcameraclubs.org>



2014 Officers

President - Sonya Lang
Phone 425-773-9680
sonyalang@hotmail.com

Vice President - Greg Thomas
Phone: 425-334-2861
thomasigolf@comcast.net

Secretary - Linda Davis
Phone: 360-658-8938
ldavis7734@comcast.net

Treasurer - Stephen Lightle
Phone: 425-330-8623
lightle@comcast.net

Standing Committee Chairpersons

Membership: Jerry Sorensen
Phone:425-238-4595

Social - Renata Kleinert and Carol Delaune
Phone: 425-773-9840 photosbyrenata@frontier.com

Sunshine: Janet Wright
Phone: 360-387-7456 photo@wavecable.com

Club Competition : Jim Basinger
Phone: 360-658-8938 jbasingerokie@comcast.net

PSA Club Representative: Kevin Siefke
Phone: 425-328-9401 ksiefke@comcast.net

NWCCC Delegate: Renata Kleinert
Phone: 425-773-9840 photosbyrenata@frontier.com

Field Trips: Stephen Lightle
Phone 425-330-8623 lightle@comcast.net

Point Records: Jim Basinger
Phone: 360-658-8938 jbasingerokie@comcast.net

Historian: Janet Wright
Phone: 360-387-7456 photo@wavecable.com

Pilchucker Editor: Sonya Lang
Phone: 425 773 9680 sonyalang@hotmail.com

Web Master: Stephen Lightle
Phone 425-330-8623 lightle@comcast.net

COMING EVENTS

Monthly Club Meeting:

7 pm at the Baker Heights Social Hall
1401 Poplar Everett Washington

November 13, 2014

3 Regular Competition Images
3 Challenge Images — Fall Scene
To: jbasingerokie@comcast.net

SEND ALL IMAGES

No later than

November 11, 2014

Dimension requirements for submitted images:
No larger than 1024 pixels wide or 768 pixels tall.

Commentary
By
Judges



NOVEMBER REFRESHMENTS
Mike Guderjohn

PILCHUCK CAMERA CLUB MEETING MINUTES

The October meeting of the Pilchuck Camera Club was called to order by President Sonya Lang at 7:05 p.m. on October 10, 2014. There were 11 members present and 1 guest.

The minutes of the September meeting were approved as printed in the October Pilchucker.

Treasurer Steve Lightle reports we still have \$1,747.66 in the treasury.

Vice President Greg Thomas presented certificates to the winners of the September competition.

Committee Reports:

Social: Mike is signed up for November.

Sunshine: Janet Wright, the current Sunshine chairman, would like somebody else to take over.

PSA Representative: Steve Lightle reports we received the October issue of PSA.

Field Trips: Steve Lightle reports he has a trip scheduled for the Columbia Gorge October 25-28.

NWCCC: No report.

Image Competition:

Image registration by Jim Basinger and projection by Steve Lightle. Tabulation by Jim Basinger. Judges Sonya Lang, Tracy Carson and Doug Goodman.

Number of images: 26 for regular competition, 14 for the monthly challenge and 11 for PSA nature. There were also 14 to be voted on as a redo for the July PSA nature..

New Business: Steve Lightle reminded everybody the Photographer's Choice images are due to him by November 1.

There was a discussion regarding the club buying a laptop computer. Greg will investigate.

Sonya reminded everybody elections are next month

Meeting adjourned at 7:23 p.m.

Respectfully submitted,

Linda Davis, Secretary

Sign-up for Meetup.com

If you are wondering how to hear about speakers, education, presentations in the area, or field trip happenings sign up on Meetup.com and join the Northwest Council of Camera Clubs meet-up group. They will be posting events from the different camera clubs that want to announce their activities or speakers to help you stay informed of the many opportunities available to the public.



Darren White Photography - Fine Art Landscapes

40 mins · 🌐

When you have low contrast scenes you can really push you histogram to the right and capture so much information (ETTR) or Exposing to the Right. I know I have mentioned this before but I thought I would share this one for the late night crowd or those who are just waking up on the other side of the world. The RAW file was about 2.5 stops over where the camera said it should be and I only had just a tiny portion of some of the yellow leaves blown out according to my histogram. A very easy fix in ACR. When you expose to the right you not only capture so many more colors and data but you will have less noise in your image too. You will have a higher signal to noise ratio and your prints will come out much cleaner. I know most of us, myself included, take the shot and look at the back of the camera and if it looks good then we stop and move on. Only to get home and have to bring up the shadows and therefore generally create or induce noise that isn't supposed to be there... When you ETTR you bring your exposure down in post processing and it provides you with more colors, contrast and much less noise....This is a single image, no blends, no masks, no layers.... no fancy processing. I maybe spent 4 min processing this one and that includes the resizing for web...





Darren White Photography - Fine Art Landscapes

3 hrs · 🌐

It's all the same file....in the previous post I just put the raw file on the right side so you could see the difference... Here is the full image...

©Darren White Photography



Unlike · Comment · Share · 👍 2,070 💬 39 ➦ 222

“Light makes photography. Embrace light. Admire it. Love it. But above all, know light. Know it for all you are worth, and you will know the key to photography.” – George Eastman

**Cover Image:
Island
by
Sonya Lang**



Canon 60D, ISO-100, f/22, 24mm,
10 sec exposure.

Second Beach in La Push, WA. I was on the beach before the sun rose up over the hill. The island was still in the shade, and the early morning fog was still lingering. Magical morning and I can't wait to go back.

**October Challenge
Flowers**



**First Place
Dahlia
by
Sharon Ely**

SEPTEMBER COMPETITION WINNERS

**1st Place
Hummer 2
Jim Basinger**



**2nd Place
Snoqualmie Falls Evening
Steve Lightle**



**2nd Place
Spa Day
Sharon Ely**



**Honorable Mention
Western Blue bird
Sharon Ely**



**Honorable Mention
Hummer 4
Jim Basinger**

PILCHUCK CAMERA CLUB OCTOBER 2014 SCORESHEET

Nbr	Title	Maker	Score	Honor
1	AMRYLLIS	TOM DETCHEMENDY	16	
2	AUSTIN	SONYA LANG	20	
3	BACKWARD GLANCE	SHARON ELY	20	
4	WHITE CALIFORNIA POPPY	JANET WRIGHT	17	
5	EXPLOSION OF COLOR	GREG THOMAS	18	
6	FOGGY SUNRISE	SHERRIE TALLMAN	15	
7	HUMMER 1	JIM BASINGER	21	
8	RAINBOW ULTRALTE 2	NORM KREGER	18	
9	MON OVER MT SHUKSAN	STEVE LIGHTLE	20	
10	SUMMER TIME AND LIVING IS EASY	TOM DETCHEMENDY	16	
11	ISLAND	SONYA LANG	21	
12	SPA DAY	SHARON ELY	23	2ND
13	MEAN KITTY	JANET WRIGHT	18	
14	KIDS CANDY AND FRIGHT	GREG THOMAS	18	
15	MT RAINIER WILDFLOWERS	SHERRIE TALLMAN	21	
16	HUMMER 2	JIM BASINGER	24	1ST
17	VICTORIA CLIPPER 3	NORM KREGER	15	
18	SIN CITY	STEVE LIGHTLE	21	
19	SERENITY	SONYA LANG	21	
20	WESTERN BLUE BIRD	SHARON ELY	22	HM
21	CHIPPY 2	JANET WRIGHT	18	
22	SUNSET GLOW ON OLYMPIC MTNS	GREG THOMAS	17	
23	MT SHUKSAN SUNSET	SHERRIE TALLMAN	21	
24	HUMMER 3	JIM BASINGER	22	HM
25	WASHINGTON PARK CRUISER	NORM KREGER	15	
26	SNOQUALMIE FALLS EVENING	STEVE LIGHTLE	23	2ND

Mushroom Photographer's Paradise

Lord Hill Regional Park

By Steve Lightle

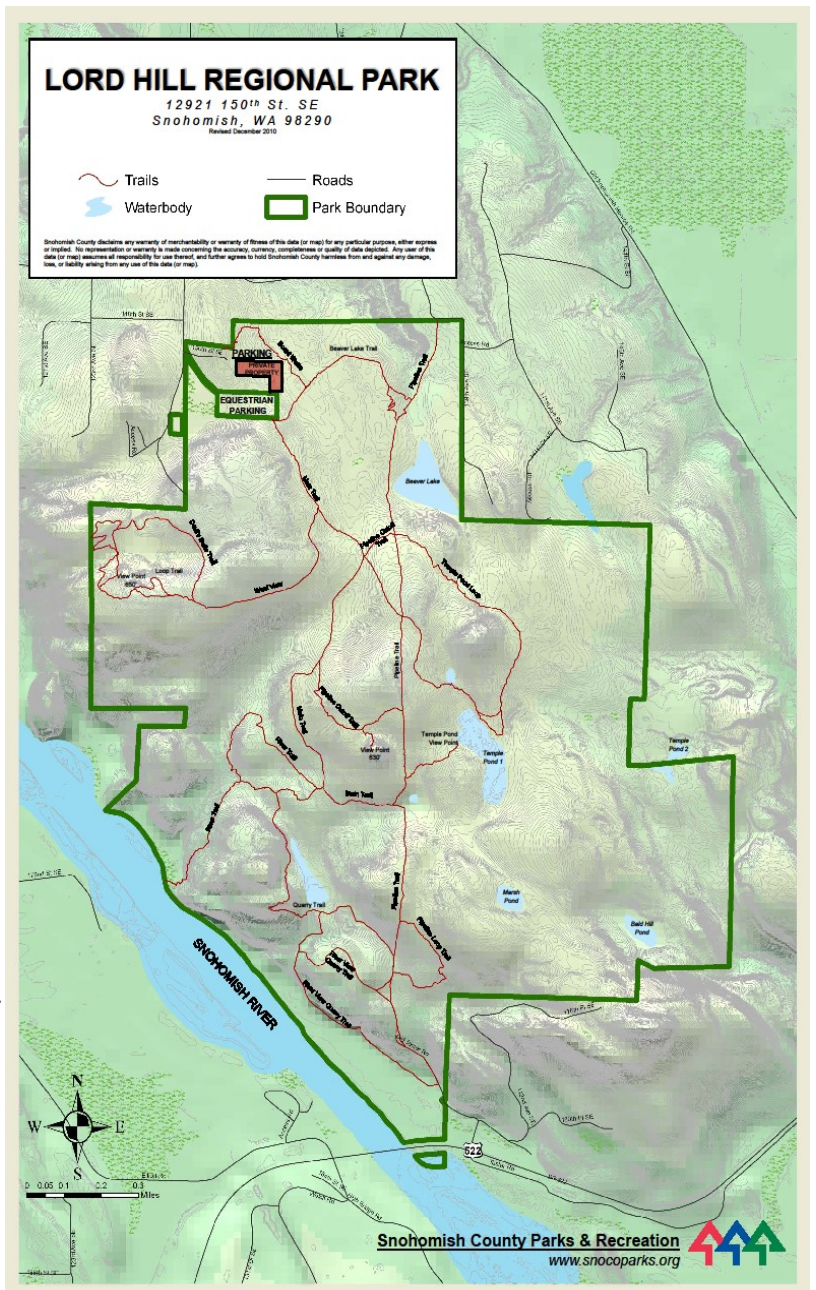
October is the best month to visit Lord Hill Regional Park to photograph mushrooms.

The park, located between Snohomish and Monroe just south of the old Snohomish Monroe highway. Access is easy with plenty of parking. it's relatively quiet with few visitors and has easy trails.

The lush forest canopy, downed trees and moist environment of the park is ideal for mushroom growth. You don't find too many mushrooms on the main trails, which are more like roads and suitable for horses and mountain bikes but venture off on the wooded side trails and mushroom are to be found everywhere.

I'm not sure exactly what draws me to photograph mushrooms; probably a combination of their shape, color, texture; maybe their mythical magical qualities.

An overcast, even a rainy day in October is ideal to do mushroom photography in the park. With the overcast days you get lots of diffused light in the understory of the forest and the trees protects you from light rain. I find that even on overcast days there is sufficient directional light that a reflector works to help light the underside and stems of the mushrooms. And of course a tripod for sharp images and a macro lens to get close. A polarizer is also often effective, even in the diffused lighting conditions, to remove highlights and saturate colors.



Here is a set of mushroom images taken over the last two years a Lord Hill Park – enjoy.



Image by Sonya



Image by Steve



Image by Steve



Image by Steve



Annual Competitions

For our newer members that may not know, PCC has several annual competitions coming up including the following:

Image of the Year—must be an image that was submitted between January 2014 and December 2014. You may submit up to 3 images.

Assigned Subject is Macro: You may submit up to 3 images and those images must have been taken between January 2014 and December 2014.

Wildflower - Must be wildflowers and you may submit up to 3 images again those must be taken during

The deadline to submit images for these competitions will be announced at the December club meeting.

If you would like more information on how to participate in these competitions please see the club handbook or ask another club member.

PILCHUCK CAMERA CLUB MEMBERS

Name	E mail	Phone
Bill Dewey	retief@deweydrive.com	425-879-9250
Carol Ilyankoff	ilyander56@gmail.com	360-678-7100
Dawn Jones	wileyc66@comcast.net	425-345-0642
Doug Goodman	goodman.douglas@gmail.com	425-954-0197
Georgina Barragan	ginafredd@hotmail.com	425-737-0116
Greg Thomas	thomasigolf@comcast.net	425-334-2861
Harvey Wade	clevelandh36@hotmail.com	213-219-4900
Janet Rapelje	jrap8a1380@gmail.com	
Janet Wright	photo@wavecable.com	360-387-7456
Jerry Sorensen	sorensenjerry@yahoo.com	425-238-4595
Jim Basinger	jbasingerokie@comcast.net	360-658-8938
Jim Turpin		
John Llaggart	imnlaggart@msn.com	360-421-3527
Kevin Siefke	ksiefke@comcast.net	425-328-9401
Linda Davis	LDavis7734@comcast.net	360-658-8938
Lloyd Johnson	lj5641@yahoo.com	425-412-3783
Mike Guderjohn	elrique64@gmail.com	701-770-6983
Norm Kreger	photo@wavecable.com	360-387-7456
Paula Bailly	paula.bailly@sno.wednet.edu	360-668-5031
Renata Kleinert	photosbyrenata@frontier.com	425-355-7758
Robert Patrick	pgrider63@comcast.net	206-450-0620
Shane Elen	selen2@comcast.net	
Sharon Ely	sharely@msn.com	253-952-8321
Sonya Lang	sonyalang@hotmail.com	360-568-9813
Steve Lightle	lightle@comcast.net	425-330-8623
Tim Garton	thgarton@gmail.com	206-714-1668
Tom Detchemendy	TomDetch@outdrs.net	360-403-9089
Tracy Carson	t.carson1@yahoo.com	425-343-3164