

# THE PILCHUCKER

VOLUME 42 ISSUE 10

JUNE 2010

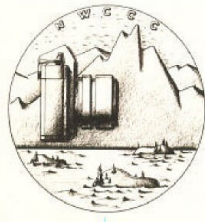


COMING EVENTS	PAGE 2
PRESIDENTS CORNER	PAGE 3
MAY MINUTES	PAGE 4
MAY EVALUATIONS	PAGE 5
MAY WINNERS GALLERY	PAGE 6
COVER SHOT	PAGE 7
PHOTOGRAPHERS CHOICE	PAGE 8
FIELD TRIP REPORT	PAGE 9
MEMBERS LIST	PAGE 10



# The Pilchuck Camera Club Bulletin

Serving members from the Puget Sound Area of Washington State



The Pilchuck Camera Club was organized June 12, 1964 and is a member of the Photographic Society of America (PSA) and the Northwest Council of Camera Clubs (NWCCC). Membership is open to anyone interested in color or monochromatic slide or digital photography. Club meetings are held at 7:00 p.m. on the second Thursday of each month in the Baker Heights Social Hall, 1401 Poplar Street, Everett, WA. .

**Pilchuck Camera Club Web Page:** <http://www.pilchuckcameraclub.com>  
**Photographic Society of America (PSA) Web Page:** <http://www.psa-photo.org>  
**Northwest Council of Camera Clubs (NWCCC)** <http://www.nwcameraclubs.org>

## 2009-2010 Officers

**President - STEVE LIGHTLE**  
**Phone: 425-330-8623** [sdlightle@comcast.net](mailto:sdlightle@comcast.net)

**Vice President -**  
**Phone:**

**Secretary - Kevin Siefke**  
**Phone: 425-328-9401** [ksiefke@comcast.net](mailto:ksiefke@comcast.net)

**Treasurer - Janet Wright**  
**Phone: 360-387-7456** [photo@wavecable.com](mailto:photo@wavecable.com)

## Standing Committee Chairpersons

**Membership: Joyce Harvey**  
**Phone: 360-659-4481** [Jmhrv1@verizon.net](mailto:Jmhrv1@verizon.net)

**Social - Renata Klenard & Carol Delaune**  
**Phone: 425-328-9401** [photosbyrenata@comcast.net](mailto:photosbyrenata@comcast.net)

**Sunshine: Janet Wright**  
**Phone: 360-387-7456** [photo@wavecable.com](mailto:photo@wavecable.com)

**Club Competition - Janet Wright**  
**Phone: 360-387-7456** [photo@wavecable.com](mailto:photo@wavecable.com)

**PSA Club Representative: Jim Basinger**  
**Phone: 360-658-8938** [jbasingerokie@comcast.net](mailto:jbasingerokie@comcast.net)

**NWCCC Delegate: Renata Klenard**  
**Phone: 425-328-9401** [photosbyrenata@comcast.net](mailto:photosbyrenata@comcast.net)

**Field Trips: Stephen Lightle**  
**Phone 425-330-8623** [SDLightle@comcast.net](mailto:SDLightle@comcast.net)

**Point Records: Jim Basinger**  
**Phone: 360-658-8938** [jbasingerokie@comcast.net](mailto:jbasingerokie@comcast.net)

**Historian: Janet Wright**  
**Phone: 360-387-7456** [photo@wavecable.com](mailto:photo@wavecable.com)

**Pilchucker Editor: Jim Basinger**  
**Phone: 360-658-8938** [jbasingerokie@comcast.net](mailto:jbasingerokie@comcast.net)

**Web Master: Stephen Lightle**  
**Phone 425-330-8623** [SDLightle@comcast.net](mailto:SDLightle@comcast.net)

# COMING EVENTS

## Monthly Club Meeting:

7pm at the Baker Heights Social Hall  
1401 Poplar  
Everett Washington

### 3 regular competition images

Please send all digital images for June competition to  
[jbasingerokie@comcast.net](mailto:jbasingerokie@comcast.net)  
**By June 8, 2010**

**Dimension requirements for submitted images:**  
No larger than 1024 pixels wide or 768 pixels tall.

## 2010 ASSIGNED SUBJECT LINES

## JUNE REFRESHMENTS

**JIM BASINGER**



## **President's Corner**

### **By Steve Lightle**



**I want to thank Anna for serving as Vice President of our club for the past eight months. We've had some exceptional presentations. And additional thanks for also doing the club news letter and web page during this time. The web page has brought us several new members.**

**And thanks Andy for reminding us each month that our competition images were due, receiving the images, organizing them for presentation and then doing the presentation. And more thanks for making sure that we had them sized correctly.**

**In the interim period between now and elections in September Janet W has agreed to take over management of the competition images and Jim B had agreed to reassume the position of newspaper editor (he's done this before in case you didn't know).**

**Thanks Jim and Janet.**

**We're still in need on an interim vice president to complete the term until September. Until the position is filled, I'll take care of those duties as well as assuming responsibility for the web site and caretaker of the club screen. Bill Dewey has graciously agreed to educate me on how to be a web master. Thanks Bill. I'll have met with Bill for my first education session by the time this gets published. I've always been interested in web pages – just never took the plunge until now.**

**So... to wrap up – the club doesn't run itself and there's plenty to do for everyone, so if you've been thinking 'next time' I'll volunteer, I'll accept the duties of an office, now would be a good time.**

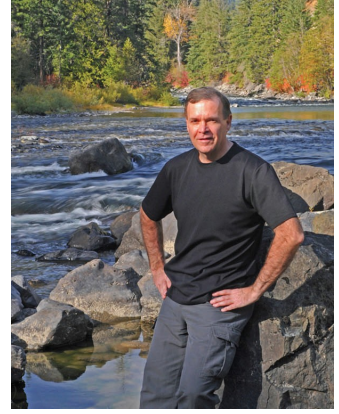
### **Pilchuck Camera Club 2011 Banquet**

**Diana and I had dinner at Collector's Choice in Snohomish last night (05/20) and we had an opportunity to speak with the manager. Plans for their new restaurant are coming along nicely if a bit delayed (they were hoping to open late June / July no August). The floor plan for the new facility are on the wall and Bob (the manager) showed me where the banquet facilities would be located and the various options they have depending on group size. We'll still want to wait until the new restaurant is open and available for inspection before we commit to the restaurant however it looks very promising.**

# **PILCHUCK CAMERA CLUB**

**Meeting minutes      MAY 13 2010**

**BY KEVIN SEIFKE**



**The regular meeting of the Pilchuck Camera Club was called to order at 7:03 P.M. by President Steve Lightle. Fourteen members and two guests (Shane Elen and Jean Eggleton's granddaughter) were present. Correspondence received: None**

**Treasurer Janet Wright presented the treasurer's report. The current balance is \$930.68. Our bank has changed from Frontier Bank to Union Bank.**

**The minutes of the April meeting were approved as printed in the Pilchucker.**

**Vice President Anna Rice presented certificates for the April club competition.**

## **Committee reports:**

**Membership: Nothing to report**

**PSA: The PSA Conference will be in Charleston, South Carolina, on October 3.**

**Northwest Council: No report**

**Social: June - Jim; July - Kevin.**

**Sunshine: A get well card will be sent to Renata's daughter.**

**Field Trips: The Palouse trip will be May 21 - 24.**

**Old business: None**

**New Business: Anna has requested that other club members take over her duties. Volunteers were as follows: Webmaster - Steve Lightle, Pilchucker Editor - Jim Basinger, and Image Registration -**

**Janet Wright (Jim will handle image registration for June). A volunteer is still needed for the position of Vice President (Anna will arrange a program for the June meeting).**

**Meeting was adjourned at 7:33 P.M.**

**Andy reported a count of 42 images in the monthly competition. Judges for the competition were Janet, Bill, and Jim, with Steve as alternate.**

**Projection was by Andy and tabulation by Anna.**

**Our program for the evening was a presentation by Anna Rice of photos from some of her favorite travel experiences.**



# PILCHUCK CAMERA CLUB

Regular Club Competition

MAY 13, 2010

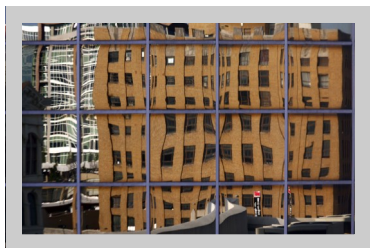
## Scores for May competition

Number	Title	Name	Score	Honor
1	Thirsty	Renata Kleinert	22	HM
2	Miners Lettuce and Fern	Kevin Siefke	19	
3	Every Which Way	Linda Davis	19	
4	Meerkat	Shirley Stich	19	
5	Morning Stroll Reflection Least Sandpiper	Bill Dewey	20	
6	Enhanced Smoke	Jim Basinger	22	HM
7	Blue Flower 1	Harvey Wade	18	
8	Actic Fox	Andy Rice	19	
9	Osprey	Joyce Harvey	18	
10	Camano Old Truck	Janet Wright	20	
11	Honey's Pt. D Zoo 2010 079	Norm Kreger	20	
12	Heads Up	Anna Rice	23	2ND
13	Ichiro	Bob Kash	23	2ND
14	Khira	Steve Lightle	21	
15	Ready to Fly	Renata Kleinert	20	
16	Plumose Anemone	Kevin Siefke	21	
17	Island in Crater Lake	Linda Davis	19	
18	Peacock	Shirley Stich	17	
19	Spring Song Common Yellowthroat	Bill Dewey	20	
20	Prickley Pear Cactus Flower	Jim Basinger	19	
21	Blue Flower 2	Harvey Wade	18	
22	A Forgotten Time	Andy Rice	20	
23	Ruddy Duck	Joyce Harvey	18	
24	White Lily	Janet Wright	21	
25	Blue Bird	Norm Kreger	20	
26	Smirk	Anna Rice	19	
27	Ichiro at Bat	Bob Kash	22	HM
28	Little Rock Reflection	Steve Lightle	23	2ND
29	Tulip Fields	Renata Kleinert	21	
30	Turkey Tail	Kevin Siefke	24	1ST
31	Tom Turkey	Linda Davis	15	
32	Tiger's Head	Shirley Stich	20	
33	Signs of Spring	Bill Dewey	20	
34	Buried	Jim Basinger	18	
35	Purple Flower	Harvey Wade	18	
36	Embarking from Ft. Lauderdale	Andy Rice	20	
37	Canvasback	Joyce Harvey	18	
38	Eagle 2010	Janet Wright	21	
39	Koala Bear	Norm Kreger	18	
40	Spring Sprung	Anna Rice	18	
41	Taking a Break	Bob Kash	20	
42	Puffin Portrait	Steve Lightle	22	HM

# MAY WINNERS GALLERY



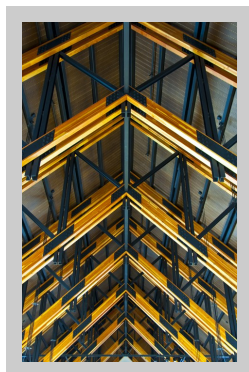
**TURKEY TAIL  
BY KEVIN SIEFKE  
FIRST PLACE**



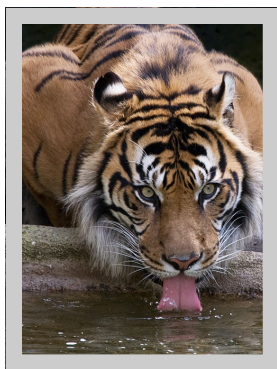
**LITTLE ROCK REFLECTION  
BY STEVE LIGHTLE  
SECOND PLACE**



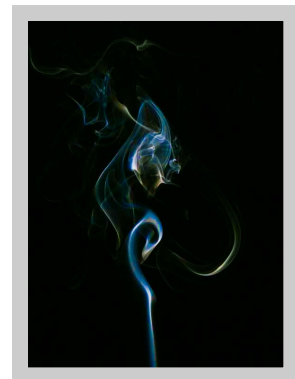
**ICHIRO  
BY BOB KASH  
SECOND PLACE**



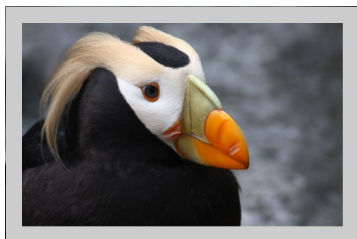
**HEADS UP  
BY ANNA RICE  
SECOND PLACE**



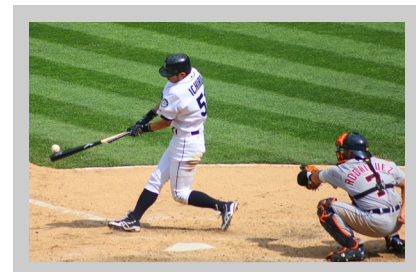
**THIRSTY  
BY RENATA KLEINERT  
HONORABLE MENTION**



**ENHANCED SMOKE  
BY JIM BASINGER  
HONORABLE MENTION**



**PUFFIN PORTRAIT  
BY STEVE LIGHTLE  
HONORABLE MENTION**



**ICHIRO AT BAT  
BY BOB KASH  
HONORABLE MENTION**

## TURKEY TAILS BY KEVIN SEIFKE

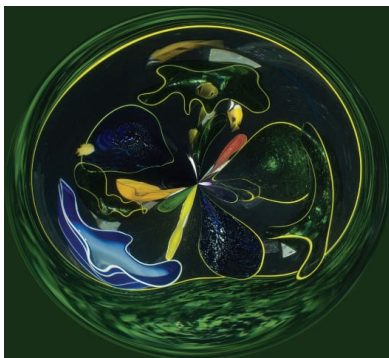
### 1ST PLACE MAY COMPETITION



I photographed this turkey tail fungus along the Railroad Grade Trail at Wallace Falls State Park on May 11. The day was one of intermittent overcast. By waiting for a period of overcast, I was able to avoid harsh contrast in the photo. Equipment used was a Nikon D300 and Micro-Nikkor 105/2.8 lens on a Gitzo GT3541LS tripod. Exposure data were ISO 400, f8, and 1/3 second. Exposure and focus were manual. For macro photography, I normally rely on a cable release and mirror lock-up to minimize camera vibration. However, when I was out on the trail, my cable release quit working, so this shot was made with a 2-second self-timer delay. The resulting image was cropped and sharpened in Photoshop Elements.



Object as a Square



Finished as a Circle

#### Making a Circle Image By Mary Tevis copied from the May 2009 Pilchucker

- 1) Select a picture you wish to make into a circle. It is best to pick one with several colors, preferably bold colors. Keep in mind, the inside colors will end up on the outside.
- 2) Bring it up on PhotoShop or Elements, and make a square by cropping it. You do not have to make a square, but if you do not, image you make will not be a circle, but will be an oval.
- 3) Go to Filter and drop down to Distort and click on Polar Coordinates and click on Polar to Rectangular (the bottom box).
- 4) Go to Image and then Rotate Canvas 180 Degrees.
- 5) Go back to Filter and drop down to Distort and click on the Polar Coordinates and this time, click on Rectangular to Polar (box on top).
- 6) Now you have a circle!

# **2010 Photographer's Choice**

**Sculpture/Statue**  
**Misplaced/Out of Place**  
**Old**  
**Pairs**  
**Dessert**  
**Sky**  
**Roses**  
**Insects**  
**Pets**  
**Trees**  
**Seashore**  
**China**  
**Motion**  
**Wildlife**  
**Funny**  
**Orange**

## **The 2010 Assigned Subject**

# **LINES**



**Another Great Outing!  
Yes, Pilchuck's latest field trip was great!**

**Once again-- "A good time was had by all!" as the old saying goes. Steve Lightle's research, careful planning and his usual jolly (pleasant, calm, friendly, ) self plus his well thought-out planning came together for six Pilchucker's latest trip.**

**Linda, Jim, Renata, Norm, Janet and Steve himself - took off from Everett on Friday morning the 21<sup>st</sup> and headed across the Pass towards the Palouse . A couple of nights at the Siesta Motel in Colfax allowed early morning rising to be on Steptoe Butte before sunrise . We made it by getting up at 4 am but didn't have the best weather on this trip. Renata had heard about the Milwaukee Road Railroad bridge ( edge of Rosalia) and we found it. Not the finest time of day but it is on our lists for the right time next trip! We loved Uniontown's wagon wheel fence, bumped into Printmaker Critique member Bruce Clifton at the restaurant in Colfax, and hit the Butte on one visit in a heck of a wind storm. Stayed at the Spokane Econo Lodge Sunday night and Monday morning found us headed for home via Highway 2, to catch our favorite old schools and barn with truck. " Kudos" Steve for once again planning such a great outing for PCC members!!**

**Janet Wright**



## PILCHUCK CAMERA CLUB MEMBERS

NAME	E-MAIL	TELEPHONE
JIM BASINGER	<a href="mailto:jbasingerokie@comcast.net">jbasingerokie@comcast.net</a>	360-658-8938
LINDA DAVIS	<a href="mailto:ldavis7734@comcast.net">ldavis7734@comcast.net</a>	360-658-8938
BILL DEWEY	<a href="mailto:retief@deweydrive.com">retief@deweydrive.com</a>	425-879-9250
CAROL DELAUNE		425-290-6705
JEAN EGGLESTON	<a href="mailto:jeggle@comcast.net">jeggle@comcast.net</a>	360-217-7235
JOYCE HARVEY	<a href="mailto:jmhrv1@verizon.net">jmhrv1@verizon.net</a>	360-659-7758
ROBERT KASH	<a href="mailto:rjkash@wavecable.com">rjkash@wavecable.com</a>	360-654-0771
RENATA KLEINERT	<a href="mailto:photosbyrenata@verizon.net">photosbyrenata@verizon.net</a>	425-773-9840
NORM KREGER	<a href="mailto:photo@wavecable.com">photo@wavecable.com</a>	360-387-7456
STEVE LIGHTLE	<a href="mailto:sdlightle@comcast.net">sdlightle@comcast.net</a>	425-330-8623
FRANK LOSO		425-355-6923
MICHAEL MAXWELL	<a href="mailto:michaelsphotography@clearwire.net">michaelsphotography@clearwire.net</a>	425-320-8875
PAUL MCKEE	<a href="mailto:paultmckee@yahoo.com">paultmckee@yahoo.com</a>	425-327-0830
MARGARET MCLEOD	<a href="mailto:ablemcleod@comcast.net">ablemcleod@comcast.net</a>	425-252-2439
KEN MORANO	<a href="mailto:moranotech@comcast.net">moranotech@comcast.net</a>	425-328-4310
JANET RAPELJE	<a href="mailto:jrapelje@wildblue.net">jrapelje@wildblue.net</a>	360-652-6623
ANDY RICE	<a href="mailto:tourist@juno.com">tourist@juno.com</a>	425-787-0618
ANNA RICE	<a href="mailto:abear@juno.com">abear@juno.com</a>	425-787-0618
ANNA SEBRING		425-334-3570
KEVIN SIEFKE	<a href="mailto:ksiefke@comcast.net">ksiefke@comcast.net</a>	
SHIRLEY STICH	<a href="mailto:sdstich@gmail.com">sdstich@gmail.com</a>	425-337-5458
MARY TEVIS	<a href="mailto:marytevis@comcast.net">marytevis@comcast.net</a>	206-533-8301
HARVEY WADE	<a href="mailto:clevelandh36@hotmail.com">clevelandh36@hotmail.com</a>	213-219-4900
JANET WRIGHT	<a href="mailto:photo@wavecable.com">photo@wavecable.com</a>	360-770-3192