

THE PILCHUCKER

NEWSLETTER FOR THE PILCHUCK CAMERA CLUB OF EVERETT, WASHINGTON

March 2010

Volume 42 Issue #7

This Issue Includes The Image of Year Awards for 2009



The Pilchuck Camera Club serves members of the Puget Sound Area of Washington State.

The Pilchuck Camera Club was organized June 12, 1964, and is a member of the Photographic Society of America (PSA) and the Northwest Council of Camera Clubs (NWCCC). Membership is open to anyone interested in color or monochromatic slide or digital photography.

**This Month's Cover Shot
is Pilchuck Camera Club's
Image of the Year for 2009
Cheetah Run by Steve Lightle**

Animal Ark is a 38 acre wildlife sanctuary and nature center located just north of Reno, Nevada. The sanctuary is home to a number of Cheetahs and once a month the public is allowed to watch the Cheetahs run. Fortunate for us, the scheduled Cheetah run coincided with our scheduled visit to Reno so a visit to Animal Ark was included in the itinerary.

The day of our visit started out clear, bright and sunny which was just what I thought we needed in order to take photos of Cheetahs running however by the time the it was time for the Cheetahs to run clouds had blown in and it became quite cold. Not the most conducive conditions for what we were trying to accomplish that day.

As a spectator / photographer, you get a bench in the stands behind a low fence. The Cheetahs are out in front of you on a dirt track. If they really wanted to get you they could. They day we visited they ran three Cheetah's twice. Way harder to track, compose, focus and get a shot that I imagined. They can run in the 60+miles per hour range.

The first couple of runs - no useable images. One I was in the wrong spot, two as I said before they are way faster than you think they're going to be and three, it takes a bit to figure out just what the Cheetahs are going to do, and where they're going to be and where you need to be for the best shot.

When it got time for the third cheetah to run, I changed my location in the stands and got a better angle on the area where the cheetahs run, and instead of trying to photograph them him through the entire course, waited for him to start the turn and fired of a sequence of shots. The image submitted for competition was shot at ISO 1600, F5.0, 1/3200 of a second. The lens was my 70-200 2.8 (non IS) set at 190 MM.



In This Issue

About the Cover.....page 2
Competition Submission Info.....page 3
February Competition Results..pages 3&4
2010 Photographer's Choice
& Assigned Subject.....page 5
Up Coming Events.....page 5
2009 IOY Banquet & Awards...pages 6-9
Minutes of Feb. Meeting.....page 10
Membership Directory.....page 11
Membership Questionnaire.....page 12

Welcome to Ken Morano and Robert Kash
Pilchuck Camera Club's newest members.

Nikon users
are now
outnumbered
by the Cannon
users.



**All photographs in the Pilchucker are owned &
copyrighted by their authors.
Use prohibited without owners permission.**

February 2010 ~ General Competition Results

Scores are based on a 27 point scale
with 3 judges (and 1 alternate) giving a score of 1 to 9.

<u>Award</u>	<u>Image Name</u>	<u>Photographer</u>	<u>Pts</u>	<u>Award</u>	<u>Image Name</u>	<u>Photographer</u>	<u>Pts</u>
1st	Ice Take Off	Bill Dewey	26	1st	Black Light Flower	Shirley Stich	26
1st	Road Runner Meep Meep	Bill Dewey	26		Lady Bug	Shirley Stich	22
	Which Was Did You Say	Bill Dewey	20		I'm the Boss Now	Shirley Stich	22
	Orange Tulip#2	Janet Wright	22		Bodie Porch	Steve Lightle	23
	Pam's Iris	Janet Wright	19		Grand Virginia City	Steve Lightle	20
	Caged	Jim Basinger	21		Virginia City	Steve Lightle	16
	Here's Looking at You	Jim Basinger	21	1st	Heron	Andy Rice	26
	2 Headed Turtle	Jim Basinger	19	3rd	Jaguar	Andy Rice	25
	Fortress	Joyce Harvey	20		Spectacled Owl	Andy Rice	21
	Montenegro	Joyce Harvey	20		Clair de Lune	Anna Rice	20
	Grand Canyon in Winter 10	Joyce Harvey	17		Pine Fresh	Anna Rice	20
HM	Wizard Island 2	Kevin Siefke	24		Looking Out	Anna Rice	18
	Ford Tough	Kevin Siefke	23				
	West Thumb	Kevin Siefke	19				
HM	Abandoned Car	Linda Davis	24				
	Bodie, CA	Linda Davis	22				
	Golden Bristlecone	Linda Davis	17				
	Snowgoose	Norm Kreger	20				
	Two Snow Geese	Norm Kreger	19				
	Plate Glass Mirror	Norm Kreger	19				
1st	Two Roses	Renata Kleinert	26				
	Hollywood Nights	Renata Kleinert	21				
	Elvis	Renata Kleinert	19				

Please send all digital images
for competition to

PCCDigitalEntry@Verizon.net

By March 9, 2010

**Dimension requirements for all submitted im-
ages:**

No larger than 1024 pixels wide by 768 pixels tall.

Other rules concerning submissions can be
found in the PCC Member handbook which is
available on PCC's website.



1st Place ~ Heron
by Andy Rice ~ 26

February
2010
Winning
Images



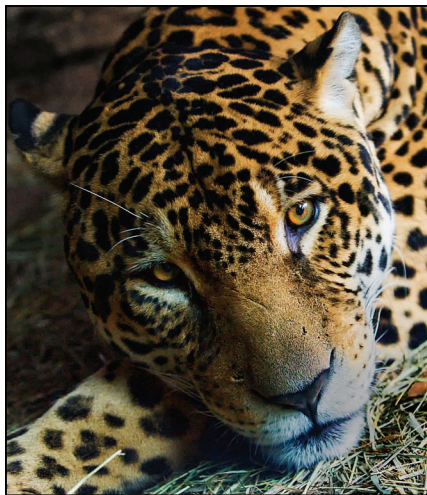
1st Place ~ Iced Take Off
by Bill Dewey ~ 26 pts



1st Place ~ Two Roses by
Renata Kleinert ~ 26 pts



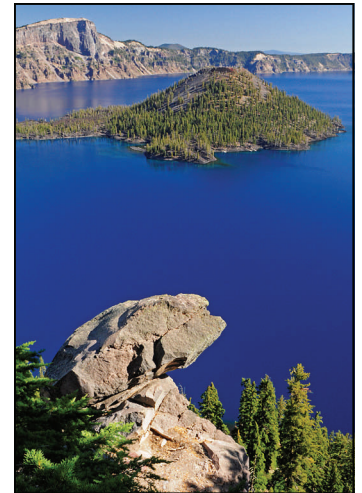
1st Place ~ Road Runner
by Bill Dewey ~ 26 pts



3rd Place ~ Jaguar by
Andy Rice ~ 25 pts



1st Place ~ Black Light Flower
by Shirley Stich ~ 26 pts



HM ~ Wizard Island 2
by Kevin Siefke ~ 24 pts



HM ~ Abandoned Car
by Linda Davis ~ 24 pts

2010's Photographer's Choice Categories and Assigned Subject

were chosen at the last Board Meeting which was held Jan. 16, 2010.

Write these down or cut this out and keep the list in you camera bag to help you re-

**The 2010 Assigned Subject is:
LINES**

2010 Photographer's Choice Categories.

Old	Pairs	Dessert
Sky	Roses	Insects
Pets	Trees	Seashore
China	Motion	Wildlife
Funny	Orange	Construction
Gears	Camping	Transportation
Sculpture/Statue		Misplaced/Out of Place

PSA Submission Calendar

for voting and actual submission months.

Categories are spread apart allowing for more club meeting time and gives others involved more time for compiling and submitting to PSA for competition. Andy compiles the images for projection at club meetings and Bill submits them to the correct PSA Rep. for interclub competition.

When Club Votes for which Category	Month	PSA Image Submission Deadline for Category
Travel (Feb due date)	January	Nature
Nature (April due date)	February	Creative & Travel
Creative (May due date)	March	
Travel (May due date)	April	Nature
	May	Creative & Travel
	June	
Nature (Oct due date)	July	
Creative (Nov due date)	August	
Travel (Nov due date)	September	
Nature (Jan due date)	October	Nature
Creative (Feb due date)	November	Creative & Travel
	December	

Pilchuck Camera Club Upcoming Events

March 11th ~ General Club Meeting

General Club Competition ~ 3 Images

PSA Creative Submission

Program: Charles Needle

www.charlesneedlephoto.com

Please extend an invitation to other photographers to join us this evening.

Refreshments: Janet & Norm

April 8, 2010 ~ General Club Meeting

Club General Competition ~ 3 images

PSA Travel ~ 3 Images

Program: TBA

Refreshments: TBA

April ~ Field Trip

Point Defiance Zoo & Aquarium

May 13, 2010 ~ General Club Meeting

May ~ Field Trip

Palouse, WA

June 10, 2010 ~ General Club Meeting

2009 Image of the Year Banquet February 27, 2010

Each year the Pilchuck Camera Club holds an Image of the Year Banquet where members and guests gather for dinner, awards are announced, a raffle is held and an enjoyable evening is had for all.

This year's banquet was held at the Collectors Choice Restaurant in Snohomish. Below are some images of the evening's events. Including the very full raffle table with donations from club members.

The following pages show more award winners and the winning images.



Members who earned the most points awarded in General Club Competitions for 2009.

Andy: 787 pts ~ Jim: 783 pts ~ Kevin: 782 pts
Congratulations!



This year's items for the raffle.





1st Place ~ Cheetah Run by Steve Lightle



2009 Image of the Year Winner & Finalists
Steve, Janet, Renata and Bill



2nd Place
Tulip Sphere by Janet Wright

Image of the Year
Each month club members submit 3 images to our general competition. Members can pick 3 from their possible 36 images previously submitted. These images are then judged by another camera club for our Image of the Year.



3rd Place



Honorable Mention
Brown Eyes by Renata Kleinert



Honorable Mention
The Prayer, Angels in the Mist by Bill Dewey



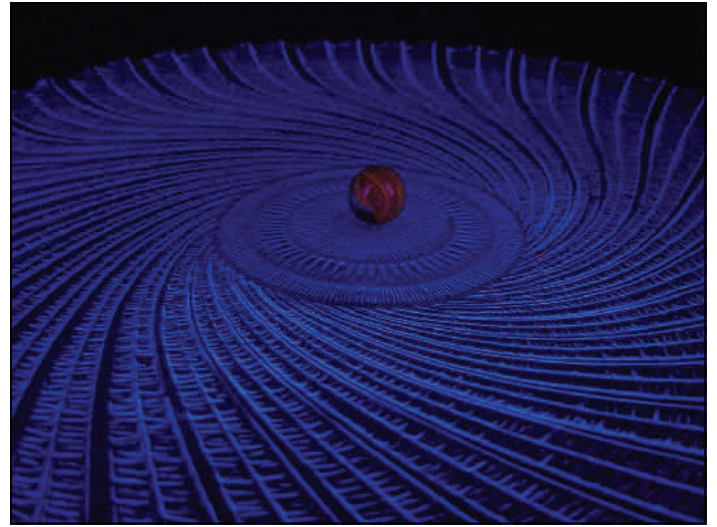
Honorable Mention
Lake Bled by Joyce Harvey



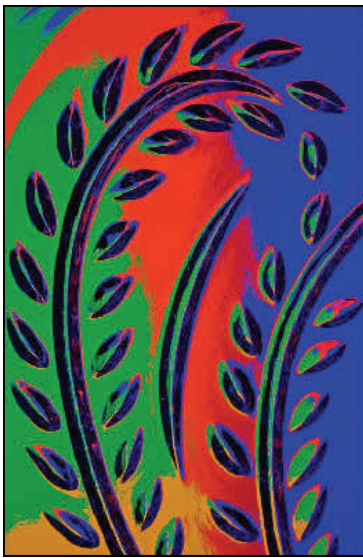
Honorable Mention
Grizzly on Guard by Bill Dewey



**2009 Assigned Subject Winner & Finalists
Steve, Anna, Renata, Janet and Kevin**



1st Place
Marble N Platter by Anna Rice



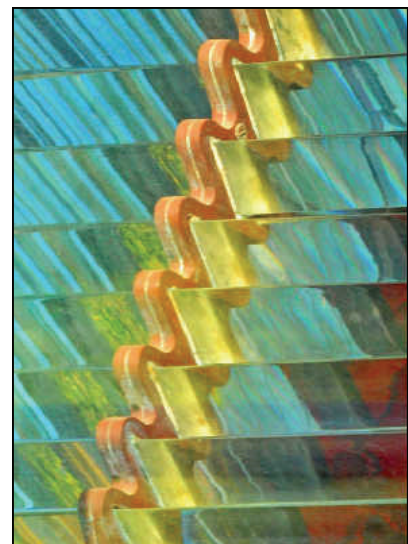
2nd Place
Glass Patterns
by Renata Kleinert



3rd Place
Glass Candle
by Janet Wright

**2009 Assigned Subject:
GLASS**

Each year the club Program Director (Vice President), with the aid of the Executive committee, chooses an annual Assigned Subject category. Club members may enter three images in this annual competition. The images must have been taken during 2009.



Honorable Mention
Cape Mears Lens
By Kevin Siefke



Honorable Mention ~Snohomish Glass
by Steve Lightle



1st Place
Yellow Spiny Daily
by Janet Wright



2nd Place
Yellow Cosmo by Norm Kreger



3rd Place
Avalanche Lily by Steve Lightle

Wildflower Award
Each member can submit 3
authentic wildflowers images



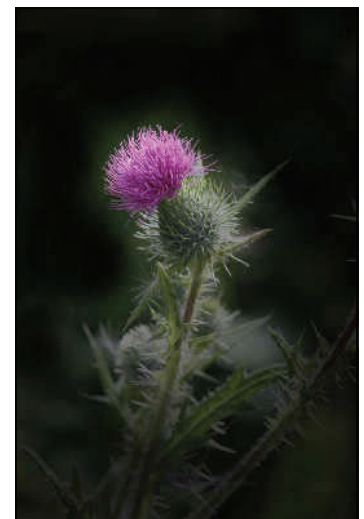
2009 Wildflower Winner & Finalists
Steve, Norm, Shirley, Janet and Kevin



Honorable Mention
Phantom Orchid
by Kevin Siefke



Honorable Mention
Bleeding Heart
by Shirley Stich



Honorable Mention
Purple Thistle
by Janet Wright

PILCHUCK CAMERA CLUB

February 11, 2010

The regular meeting of the Pilchuck Camera Club was called to order at 7:08 P.M. by President Steve Lightle. Sixteen members were present.

Correspondence received: Brochures advertising The Mountaineers 2010 Basic Photography Course

Treasurer Janet Wright presented the treasurer's report. The current balance is \$813.

The minutes of the January meeting were approved as printed in the Pilchucker.

Vice President Anna Rice presented certificates for the January club competition.

Committee reports:

Membership: Two new members tonight - Ken Morano and Robert Kash

PSA: Nothing top report, other than receiving the new PSA Journal

Northwest Council: Members can register and post images on the NWCC website.

Social: March - Norm, Janet, and Anna; open after that. Linda requested that someone else take over this duty; Carol and Renata volunteered to do so.

Sunshine: Nothing to report

Field Trips: No field trips scheduled. There is a tentative plan to go to the Palouse in May.

Old business: Image of the Year Banquet is scheduled for February 27 at 5:00 P.M. at Collector's Choice in Snohomish. Cost of the banquet is \$28.00 each.

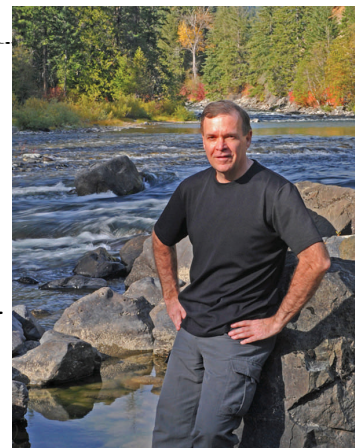
New Business: Steve noted that club bylaws allow the President to appoint officer replacements, subject to member approval at the next club meeting. We also need to consider whether partial terms count as a term for purposes of the two-year term limit.

Meeting was adjourned at 7:30 P.M.

Andy reported a count of 36 images in the monthly competition. Judges for the competition were Janet, Carol, and Linda, with Renata as alternate. Projection was by Andy and tabulation by Anna.

The evening's program was a presentation of 2009 Best of the Best ICIC (PSA)..

Kevin Siefke, Secretary



Pilchuck Camera Club Membership Directory

Club Position	Name	Email Address	Phone
Image Recorder & PSA Rep.	Jim Basinger	jbasingerokie@comcast.net	360-658-8938
	Linda Davis	ldavis7734@comcast.net	360-658-8938
	Bill Dewey	retief@deweydrive.com	425-879-9250
Social	Carol Delaune		425-290-6705
Membership	Joyce Harvey	jmhrv1@verizon.net	360-659-7758
	Robert Kash	rjkash@wavecable.com	360-654-0771
Social	Renata Kleinert	Photosbyrenata@comcast.net	425-328-9401
	Norm Kreger	photo@wavecable.com	360-387-7456
President, Field Trip Director & Lifetime Member	Steve Lightle	sdlightle@comcast.net	425-330-8623
	Frank Loso		425-355-6927
	Michael Maxwell	michaelsphotography@clearwire.net	425-320-8875
	Paul McKee	paultmckee@yahoo.com	425-327-0830
	Margaret McLeod	ablemcleod@comcast.net	425-252-2439
	Ken Morano	moranotech@comcast.net	425-328-4310
	Don Rapelje	Erap81@wildblue.net	360-652-6623
Lifetime Member	Janet Rapelje	jrapelje@wildblue.net	360-652-6623
Club Competition	Andy Rice	tourist@juno.com	425-787-0618
VP, Pilchucker Editor, Web Master	Anna Rice	abear@juno.com	425-787-0618
Lifetime Member	Anna Sebring		425-334-3570
Secretary	Kevin Siefke	ksiefke@comcast.net	425-328-9401
	Shirley Stich	sdstich@gmail.com	425-337-5458
	Mary Tevis	marytevis@comcast.net	206-533-8301
	Harvey Wade	cleveland23@hotmail.com	213-219-4900
History, Sunshine, Treasurer & Lifetime Member	Janet Wright	photo@wavecable.com	360-387-7456

This information is for club use only.

The following questionnaire was recently emailed to club members so I could create some articles and hopefully be able to let the Club members know more about each other. I have only received 3 answered questionnaires returned and answered. Please take a few minutes to fill out the one online or the one below and give it to Anna at our next club meeting.

Dear Pilchuck Camera Club members please answer the following questions and send it back to me by email or hand it to me at the next club meeting.

You can give one word answers and answer as many as you can/want. I have some fun ideas to use for our newsletter with this information. Thank you! Anna

Name-

What interested you in photography-

How long taking pictures-

What was your first camera-

Favorite season-

What kind of camera do you use now-

Favorite lens-

Favorite place to take pictures locally within 30 miles-

Favorite place to take pictures within 100 miles-

Favorite color-

Favorite place to take pictures 100+ miles away-

Dream place to visit and photograph-

What kind of photography interests you the most- macro- birds- flowers- landscape-people.....-

Favorite dessert-

What are your favorite subjects to photograph-

Have you ever won a photographic award, if so what kind of award-

Favorite food-

If you could have any photographic equipment, what would you get-