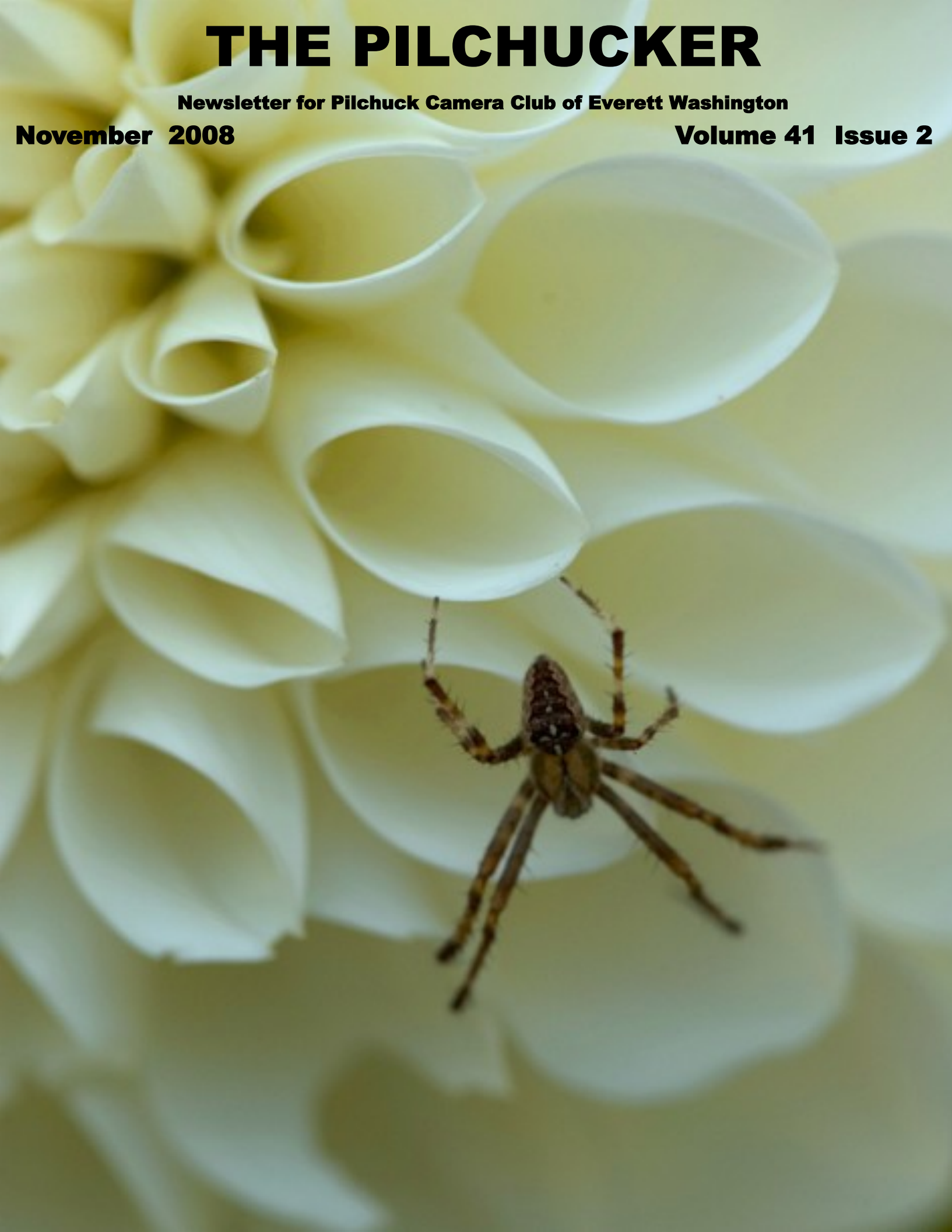


THE PILCHUCKER

Newsletter for Pilchuck Camera Club of Everett Washington

November 2008

Volume 41 Issue 2



The Pilchuck Camera Club

Serving members from the Puget Sound Area of Washington State

The Pilchuck Camera Club was organized June 12, 1964, and is a member of the Photographic Society of America (PSA) and the Northwest Council of Camera Clubs (NWCCC). Membership is open to anyone interested in color or monochromatic slide or digital photography.

Club meetings are held at 7:00 p.m. on the second Thursday of each month in the Baker Heights Social Hall, 1401 Popular Street, Everett, WA. [Click here for meeting site map.](#)

Pilchuck Camera Club Web Page: <http://www.geocities.com/pilchuckcc>

Photographic Society of America (PSA) Web Page: <http://www.psa-photo.org>

Northwest Council of Camera Clubs (NWCCC) <http://www.nwcameraclubs.org>

2008-2009 Officers

President: Steve Lightle
Phone 425-330-8623
SDLightle@comcast.net

Secretary: Kevin Siefke
Phone: 425-328-9401
ksiefke@comcast.net

Vice President: Janet Wright
Phone: 360-387-7456
photo@wavecable.com

Treasurer: Mary Tevis
Phone: 206-533-8301
marytevis@comcast.net

Standing Committee Chairpersons

Membership: Joyce Harvey
Phone: 360-659-4481
jmhrv@msn.com

Sunshine: Janet Wright
Phone: 360-387-7456
photo@wavecable.com

Historian: Janet Wright
Phone: 360-387-7456
photo@wavecable.com

Image Records: Jim Basinger
Phone: 360-658-8938
jbasingerokie@comcast.net

Field Trips: Steve Lightle
Phone 425-330-8623
SDLightle@comcast.net

Pilchucker Editor: Jim Basinger
Phone: 360-658-8938
jbasingerokie@comcast.net

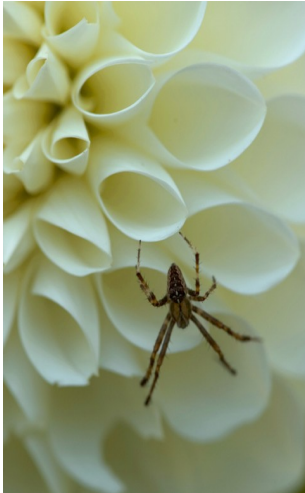
Club Competition: Andy Rice
Phone: 425-787-0618
tourist@juno.com

NWCCC Delegate: Renata Kleinert
Phone 425-355-7758
photosbyrenata@verizon.net

Social: Linda Davis
Phone: 360-658-8938
ldavis7734@comcast.net

PSA Rep: Jim Basinger
Phone: 360-658-8938
jbasingerokie@comcast.net

COVER SHOT



PHOTOGRAPHER: Mary Tevis

LOCATION: Early September at Volunteer Park at the dahlia bed. It's a huge bed of every kind and color of dahlia you could think of.

EQUIPMENT: Nikon D700 with Nikor 105 mm Macro Lens shot at f9 for 1/320 of a second on Manual setting with a Tripod.

SITUATION : after determining that the afternoon light is too bright I went as early as I could in the morning. The bed faces west and there are large trees behind it on the east so you don't get a lot of light until about 11:30 in the morning.

Coming events

Send all digital images to

PCCDigitalEntry@Verizon.net

November 13, 2008

Regular meeting 3 images

2008 Photographers Choice images Due give to Steve

Program: Best of PSA ICIC 2008

Refreshments: Norm Kreger

December 11, 2008

Regular meeting 3 images

Program: showing of Photographers choice images

Refreshments: Everyone (Christmas Social)

January 8, 2009

Regular meeting 3 images

3 nature images

3 travel images

send or bring to Steve

3 image of the year images

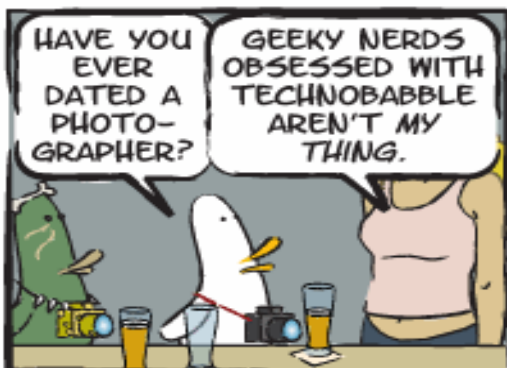
3 wildflower images

3 assigned subject images

Program : Steve Lightle will show how to do a slide show using Photoshop elements 6 and Pro Show Gold

Refreshments : Margaret McLeod

What The Duck



The Pilchucker



3



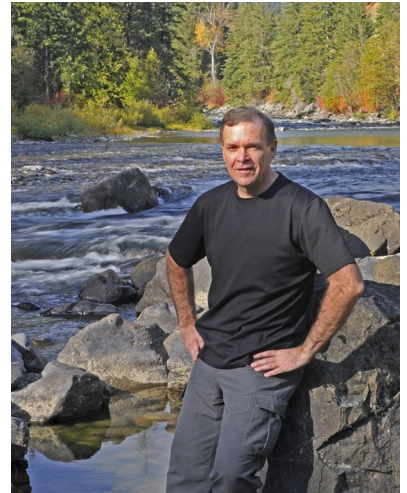
November 2008

<http://www.whattheduck.net/>

PILCHUCK CAMERA CLUB Minutes

October 9, 2008

By Kevin Siefke



The regular meeting of the Pilchuck Camera Club was called to order at 7:25 P.M. by President, Steve Lightle. Present were 12 members and 1 guest – Diana Lightle.

The minutes of the September meeting were approved as printed in the Pilchucker.

Correspondence received: None

The treasurer's report was given by Mary. The current balance is \$943.28

Janet W. presented certificates to winners of September club competition and the PSA Nature competition.

The night's program was 2008 PSA tops in nature, travel, and photojournalism. In addition, Steve presented a slide show of images from the Photo Scavenger Hunt at Pike Place Market and Jim presented a slide show of waterfowl that we might see at the Northwest Wildfowl Farm (see Field Trips, below).

Committee reports:

Membership: Two new members – Carol Delanne and Renata Kleinert.

PSA: Jim reported May results – Pilchuck Camera Club took next-to-last place in Group B

Northwest Council: Renata reported a good turnout at the recent conference. The new president is Bruce from Puget Sound CC; Renata was reelected vice-president.

Social: November – Norm, December - all

Sunshine: Card sent to Janet R. on passing of her daughter.

Field Trips: October 11 & 12 – Digital Photo Expo at Lynnwood Convention Center

October 18 – Waterfowl at Northwest Wildfowl Farm at Lake Cassidy

Old business: None

New Business: None

Andy R. reported 26 digital images in the monthly competition. Judges for the competition were Joyce, Renata, and Kevin, with Norm as alternate.

Projection was by Andy and tabulation by Steve.

Meeting was adjourned at 8:03 P.M.

Kevin Siefke, Secretary

President's Corner

By Steve Lightle



I hung onto it far longer than was reasonable. Film camera et al. Emotional attachment is the only explanation.

I kept telling my self I was going to do a photo outing and use up the film but at each opportunity I took the digital camera instead. So on Monday, Oct 20th I had a day off went to CameraTech in Ballard where they checked everything and double checked and then gave me the news. It's film you know. Not as much demand as there used to be. Projectors? Yes we previously only did those on consignment but we will purchase them for you. So here is what's gone. 1 Canon EOS3, 1 very large Bogen ball head, 2 Kodak 5200 projectors, 1 Chief 2 tier projector stand, 1 Gemini dissolve unit, 1 Spectra slide show recorder / playback machine, 1 Tiffen slide show recorder / playback machine. I only used the projection equipment one time to make one show and then almost immediately converted it to digital. The conversion was easy. Slide show manipulation a breeze. Much more versatility. That convinced me I'd never to another mechanical show. And you've all seen the results of that change.

Oh.. Your curious about how much you get for old film / slide equipment if you wholesale it?

Camera, \$105. Ball Head \$30 (that was a surprise considering what you're going to read next). ALL of the projection equipment \$30. The original offer was \$25 but I mentioned that Kenmore had offered \$30 so they matched it (not like I was going to pack everything up and drive to Kenmore for \$5,00). Total \$165.00

I also had a table top projector / sorter / slide viewer which I got when I first started doing slides. It wasn't good at any of them. CameraTech recommended the Goodwill store for that item which is what I did.

But also in exchange I got storage room that all of this gear was taking up and I really wasn't going to ever use it again. In fact I hadn't touched the projectors except to move them from one room to another in the past year.

Oh.. And yes I still have a slide projector and a screen. You know.... Just in case.

October Evaluations

Title	Maker	Points	
Mt Shuksan	Janet Wright	24	2nd Place
Pink Day Lily	Janet Wright	23	
Sunflower and Purple	Janet Wright	21	
Cape Disappointment Lighthouse	Linda Davis	22	
Marbled Godwit	Linda Davis	21	
Jessies	Linda Davis	21	
Gulls	Kevin Siefke	25	1st Place
Mt Rainier	Kevin Siefke	24	2nd Place
Sea Purslane	Kevin Siefke	23	
Stevens Pass	Jim Basinger	21	
Marbled Godwit	Jim Basinger	21	
White Tailed Kite	Jim Basinger	20	
Komodo	Andy Rice	23	
Take Off	Andy Rice	20	
Viennese Lily	Andy Rice	23	
Jester	Steve Lightle	21	
Masquerade	Steve Lightle	23	
New Orleans Mime	Steve Lightle	20	
Night Images	Norm Kreger	24	2nd Place
Silver Shower	Norm Kreger	20	
Starburst	Norm Kreger	21	
Joy	Mary Tevis	21	
Spiderman	Mary Tevis	23	
Juneau	Mary Tevis	21	
Rainy Day Maple	Margaret McLeod	23	
Song Sparrow on Blackberry	Margaret McLeod	20	

October Winner's Gallery



Gulls
By Kevin Siefke
First Place



Mt Shuksan
By Janet Wright
Second Place



Night Images
By Norm Kreger
Second Place



Mt Rainier
By Kevin Siefke
Second Place

Images in this issue are copyrighted by their respective owner. All rights reserved.

CLUB MEMBERS

NAME	E-MAIL ADDRESS (LINKS)	PHONE #
JANET RAPELJE (Life Member)	jaric@eskimo.com	360-652-6623
STEVE LIGHTLE (Life Member)	SDLightle@comcast.net	425-330-8623
JANET WRIGHT (Life Member)	photo@wavecable.com	360-387-7456
ANNA SEBRING (Life Member)		425-334-3570
JOYCE HARVEY	jmhrv@msn.com	360-659-4481
NORM KREGER	photo@wavecable.com	360-387-7456
ANDREW RICE	tourist@juno.com	425-787-0618
LINDA DAVIS	ldavis7734@comcast.net	360-658-8938
DON RAPELJE	erap75@eskimo.com	360-652-6623
ANNE BERGSMA	arbergsma@hotmail.com	360-368-6960
LYNDA BURGAN	bluemooncabin@yahoo.com	425-334-9598
TOM CLEMANS	tomclemans@hotmail.com	425-238-3919
MARY TEVIS	marytevis@comcast.net	206-533-8301
KEVIN SIEFKE	ksiefke@comcast.net	425-328-9401
JIM BASINGER	jbasingerokie@comcast.net	360-658-8938
MATT BOESPFLUG	mattboespflug@hotmail.com	360-927-7040
RENATA KLEINERT	photosbyrenata@verizon.net	425-355-7758
MARGARET MCLEOD	ablemcleod@comcast.net	425-252-2439
CAROL DELANNE		425-290-6705

2008 PHOTOGRAPHER'S CHOICE LIST

Images are due at November 2008 club meeting

Images will be shown at December 2008 meeting.

- 1 BLACKLIGHT
- 2 REFLECTIONS
- 3 SMOKE
- 4 FISHING EQUIPMENT
- 5 PURPLE
- 6 CURVES
- 7 MUSICAL INSTRUMENT/MUSICIAN
- 8 STAINED GLASS
- 9 TRAINS
- 10 CHURCH
- 11 METAL
- 12 BABY
- 13 STILL LIFE
- 14 CANDLE(S)
- 15 ANIMAL
- 16 FALL COLORS
- 17 MIST/FOG
- 18 MOUNTAINS
- 19 PARADE
- 20 ACTION

Just a few days left to take these 20 photos. Some of the subjects you will probably photograph anyway so please do the rest of them and let's have a good turnout of people who show photographer's choice images at our December 2008 meeting.

2008 Assigned subject BARNs



Pilchuck Camera Club's

PSA Contact:

Jim Basinger

jbasingerokie@comcast.net

JOIN PSA

PSA WEBSITE

<http://www.psa-photo.org/>